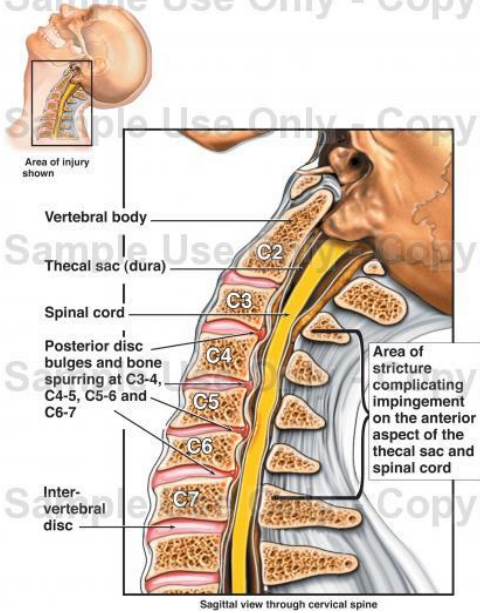


# MEDICAL-LEGAL FAX MONTHLY

## Trauma Series #28

### Neck Injury & Risk Factors Due to Rear End Collisions

C3 to C7 Multilevel Cervical Spine Injury



A recent study revealed that occupants that have their head turned during a rear end collision suffer greater injury than all other collisions. Manohar et al. (2006) stated that “**In a 5-year retrospective study of 11,000 patients with cervical spine injury, 87.4% had soft tissue injuries...more than 25 of the patients. reported symptoms more than 5 years following whiplash**” (p. 420). The symptoms commonly encountered included cranial nerve irritation, neck and upper extremity pain, restricted neck motion and paresthesia (numbness). This study concluded that “Head-turned rear impact caused **significantly greater injury [to the cervical spine]**, as compared to head-forward rear and frontal impacts...” (Manohar et al., 2006, p.420) Therefore, when taking a history on your whiplash patients, be sure to ask, “Were you looking straight ahead or was your head turned?” as this is a “significant risk factor (a circumstance that makes a situation worse),” it is vital to determine when eliciting a client’s history.

Image Compliments of Medical Legal Art via The Doe Report ([www.doereport.com](http://www.doereport.com)). Copyright © 2010 Medical Legal Art, All rights reserved.

Premier Health Center  
2109 S. Bowen Road  
Arlington, TX 76013  
Phone 817-261-6100  
Fax 817-460-7550